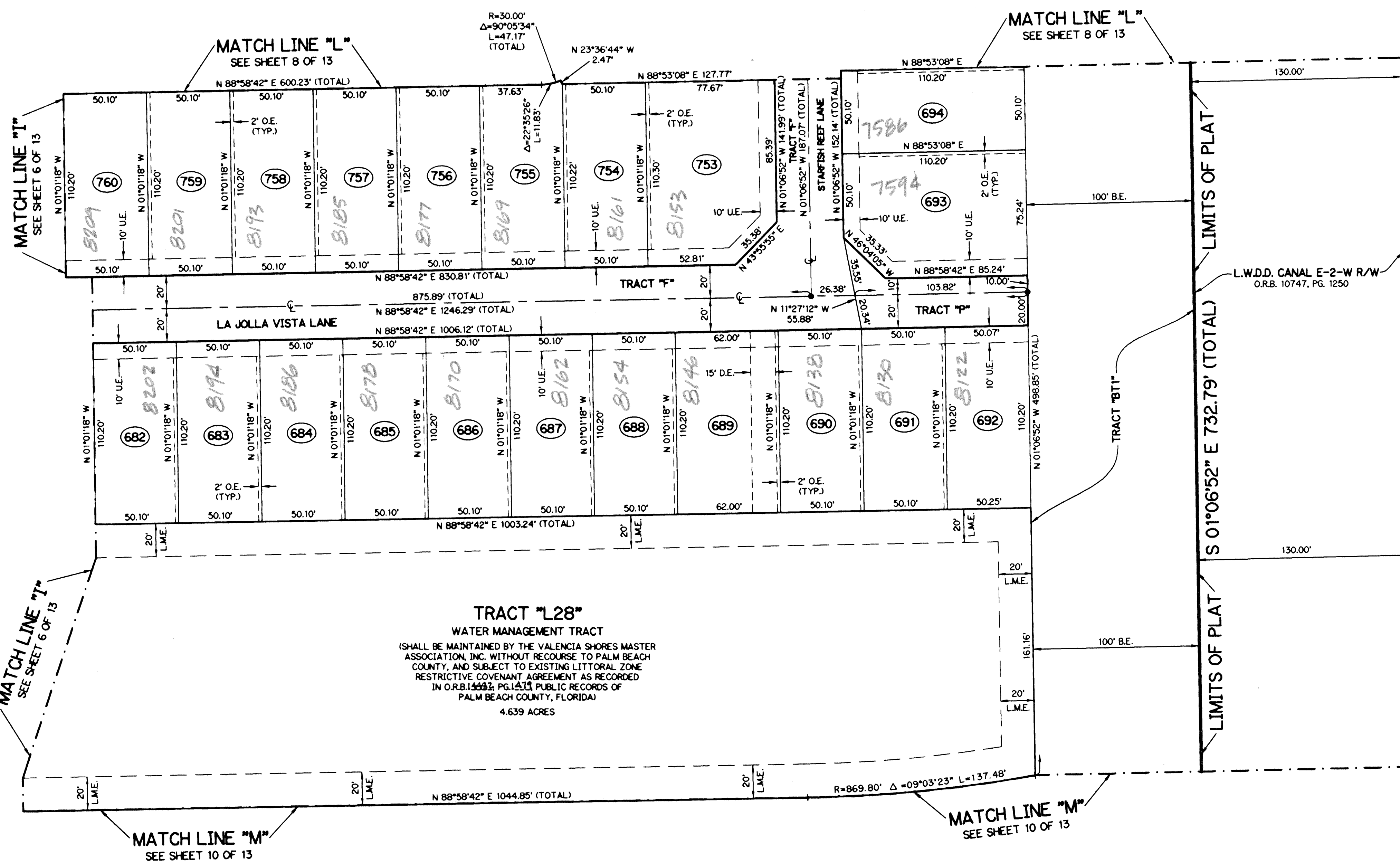
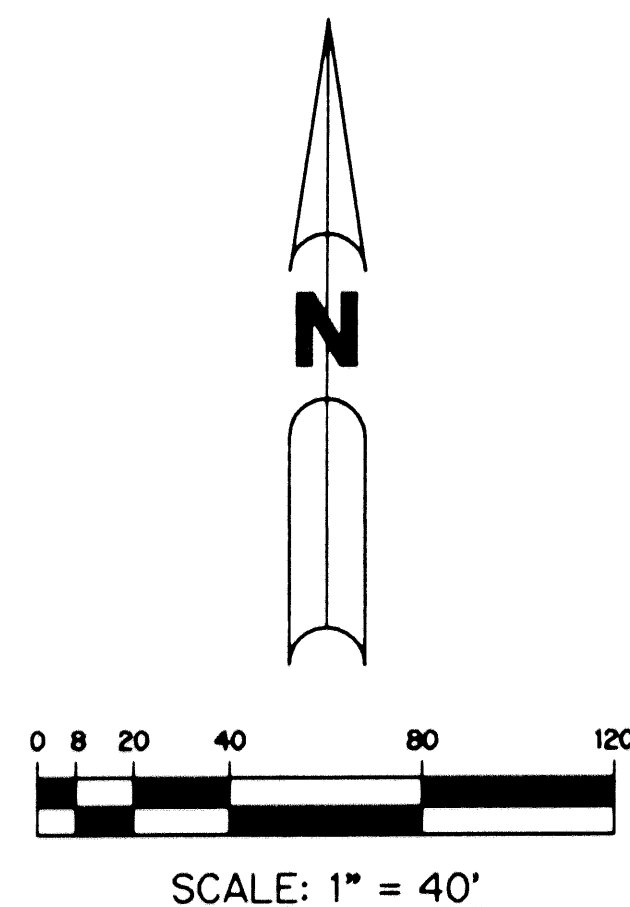


VALENCIA SHORES - PLAT THREE

BEING A REPLAT OF ALL OF TRACTS 58, 59, 80, 81, 85 THROUGH 87, 106 AND 107, A PORTION OF TRACTS 57, 60, 79, 82, 84, 88, 105 AND 108, BLOCK 42, AND A PORTION OF THE ROAD, DITCH AND DYKE RESERVATION LYING BETWEEN SAID TRACTS 79 THROUGH 82 AND SAID TRACTS 84 THROUGH 88, ALL ACCORDING TO THE PLAT OF PALM BEACH FARMS COMPANY PLAT NO. 3, AS RECORDED IN PLAT BOOK 2, PAGES 45 THROUGH 54, PUBLIC RECORDS OF PALM BEACH COUNTY, FLORIDA, AND TRACT "BT-9", VALENCIA SHORES - PLAT ONE, ACCORDING TO THE PLAT THEREOF, AS RECORDED IN PLAT BOOK 93, PAGES 88 THROUGH 113, PUBLIC RECORDS OF PALM BEACH COUNTY, FLORIDA, LYING IN SECTIONS 7 AND 8, TOWNSHIP 45 SOUTH, RANGE 42 EAST, PALM BEACH COUNTY, FLORIDA

THIS INSTRUMENT PREPARED BY
PERRY C. WHITE, P.S.M. 4213, STATE OF FLORIDA
LAWSON, NOBLE AND WEBB, INC.
ENGINEERS PLANNERS SURVEYORS
420 COLUMBIA DRIVE
WEST PALM BEACH, FLORIDA 33409
LB-6674

SHEET 9 OF 13 NOVEMBER, 2002



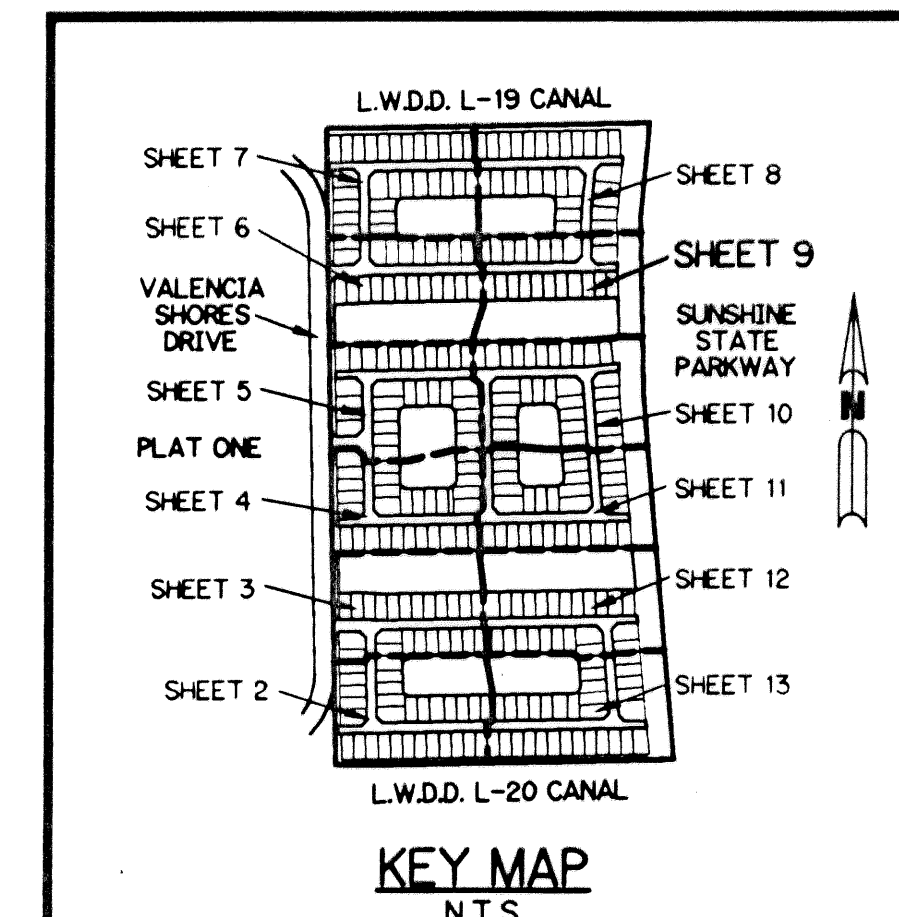
LEGEND:

- - SET PERMANENT REFERENCE MONUMENT, L.B. #6674
- - FOUND PERMANENT REFERENCE MONUMENT, L.B. #6674
- - SET PERMANENT CONTROL POINT, L.B. #6674
- - FOUND PERMANENT CONTROL POINT, L.B. #6674
- Δ - DELTA ANGLE
- B.E. - BUFFER EASEMENT
- CB - CHORD BEARING
- CH - CHORD DISTANCE
- C - CENTERLINE
- D.B. - DEED BOOK
- D.E. - DRAINAGE EASEMENT
- GRD. - GROUND
- L - ARC LENGTH
- L.A.E. - LIMITED ACCESS EASEMENT
- L.M.A.E. - LAKE MAINTENANCE ACCESS EASEMENT
- L.M.E. - LAKE MAINTENANCE EASEMENT
- L.W.D.D. - LAKE WORTH DRAINAGE DISTRICT
- NR - NOT RADIAL
- N.T.S. - NOT TO SCALE
- O.E. - OVERHANG EASEMENT
- O.R.B. - OFFICIAL RECORD BOOK
- P.B. - PLAT BOOK
- P.B.C.U.E. - PALM BEACH COUNTY UTILITY EASEMENT
- P.C. - POINT OF CURVATURE
- P.C.P. - PERMANENT CONTROL POINT
- P.D.E. - PRIVATE DRAINAGE EASEMENT
- PGS. - PAGES
- P.O.B. - POINT OF BEGINNING
- P.O.C. - POINT OF COMMENCEMENT
- P.S.M. - PROFESSIONAL SURVEYOR AND MAPPER
- P.T. - POINT OF TANGENCY
- R - RADIUS
- RAD. - RADIAL
- R.D. & D. - ROAD, DITCH & DYKE RESERVATION
- PER P.B. 2, PG. 45 - 54
- R/W - RIGHT-OF-WAY
- S.F. - SQUARE FEET
- TYP. - TYPICAL
- U.E. - UTILITY EASEMENT
- NR - NON-RADIAL

SUNSHINE STATE PARKWAY
(O.R.B. 1131, PG. 58)
(O.R.B. 8223, PG. 1084)
(VARIABLE R/W)

NOTE:

COORDINATES SHOWN ARE GRID COORDINATES
DATUM = NAD 83 (1990) ADJUSTMENT AS READJUSTED BY PALM BEACH COUNTY IN 1998
ZONE = FLORIDA EAST ZONE
LINEAR UNIT = U.S. SURVEY FEET
COORDINATE SYSTEM = 1983 STATE PLANE TRANSVERSE MERCATOR PROJECTION
ALL DISTANCES ARE GROUND
SCALE FACTOR = 1.0000217
PLAT BEARING = GRID BEARING
NO ROTATION



SUBDIVISION VALENCIA SHORES PL-3
BOOK 97 PAGE 80
FLOOD MAP #185A
FLOOD ZONE B
QUAD # 44
SE 744
PUD NAME VALENCIA SHORES